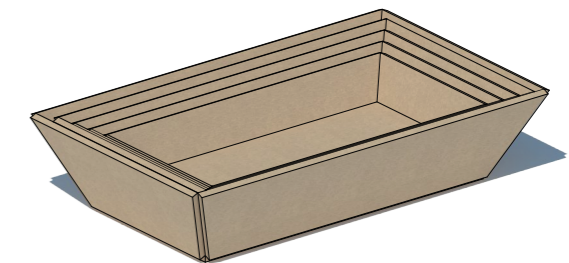
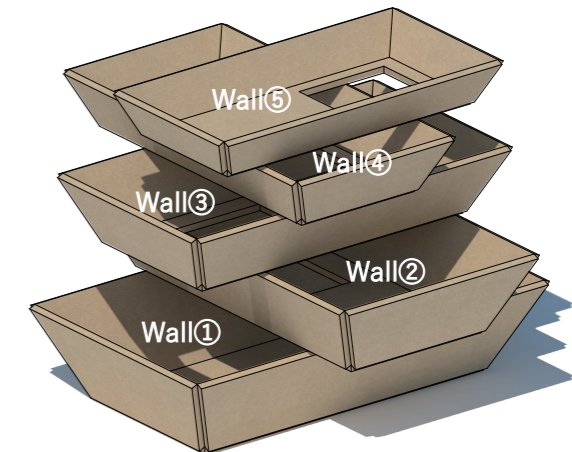
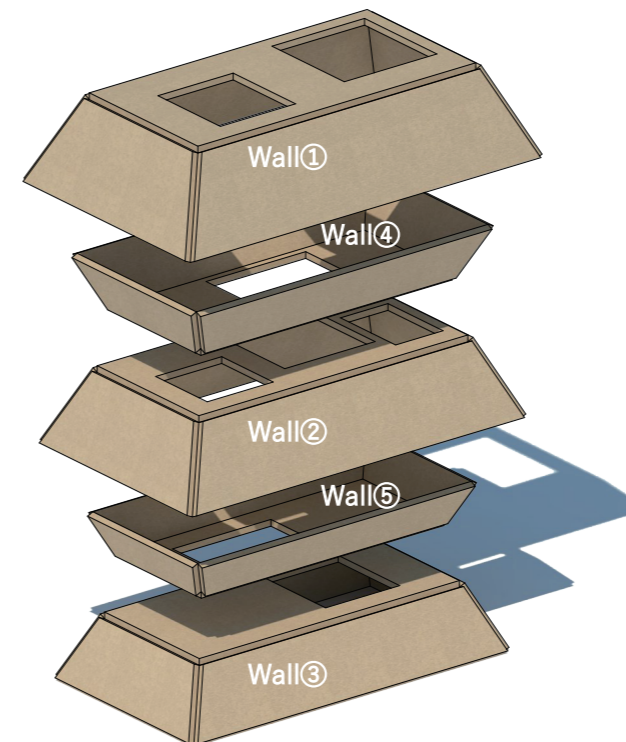
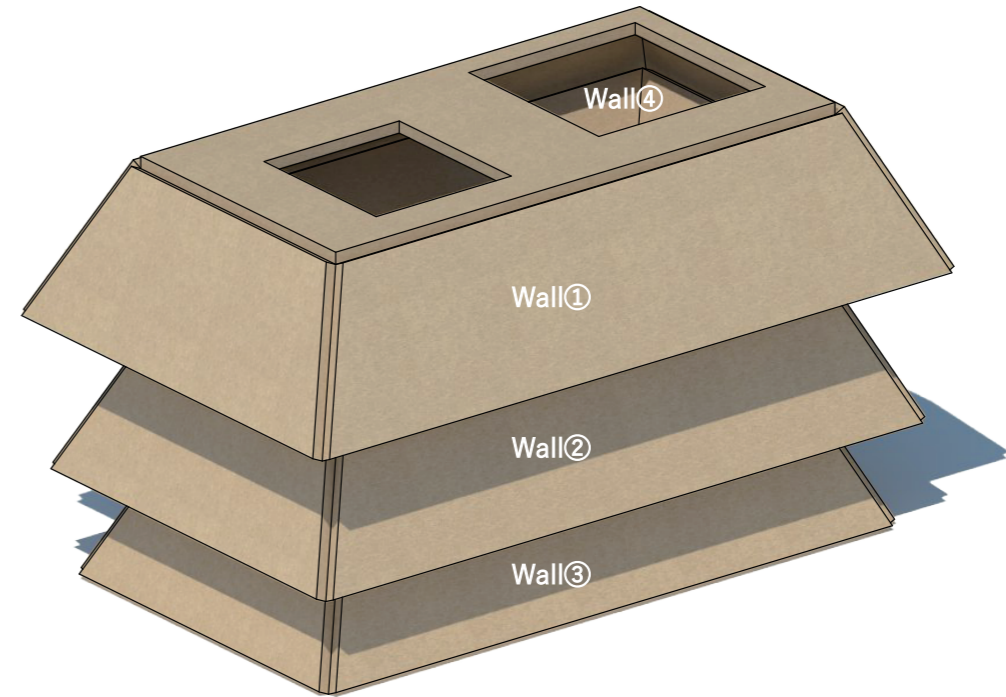
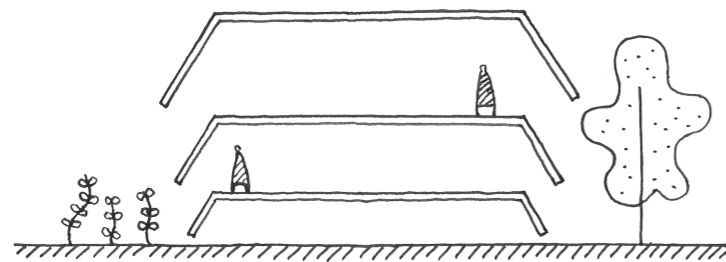
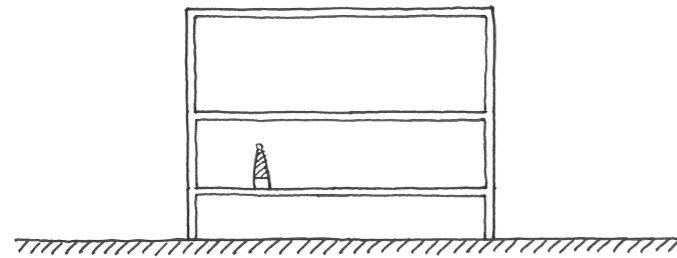


# House of opened wall



Most walls of house are straight.

But the walls of this house are not straight.

These are opened because of leaning.

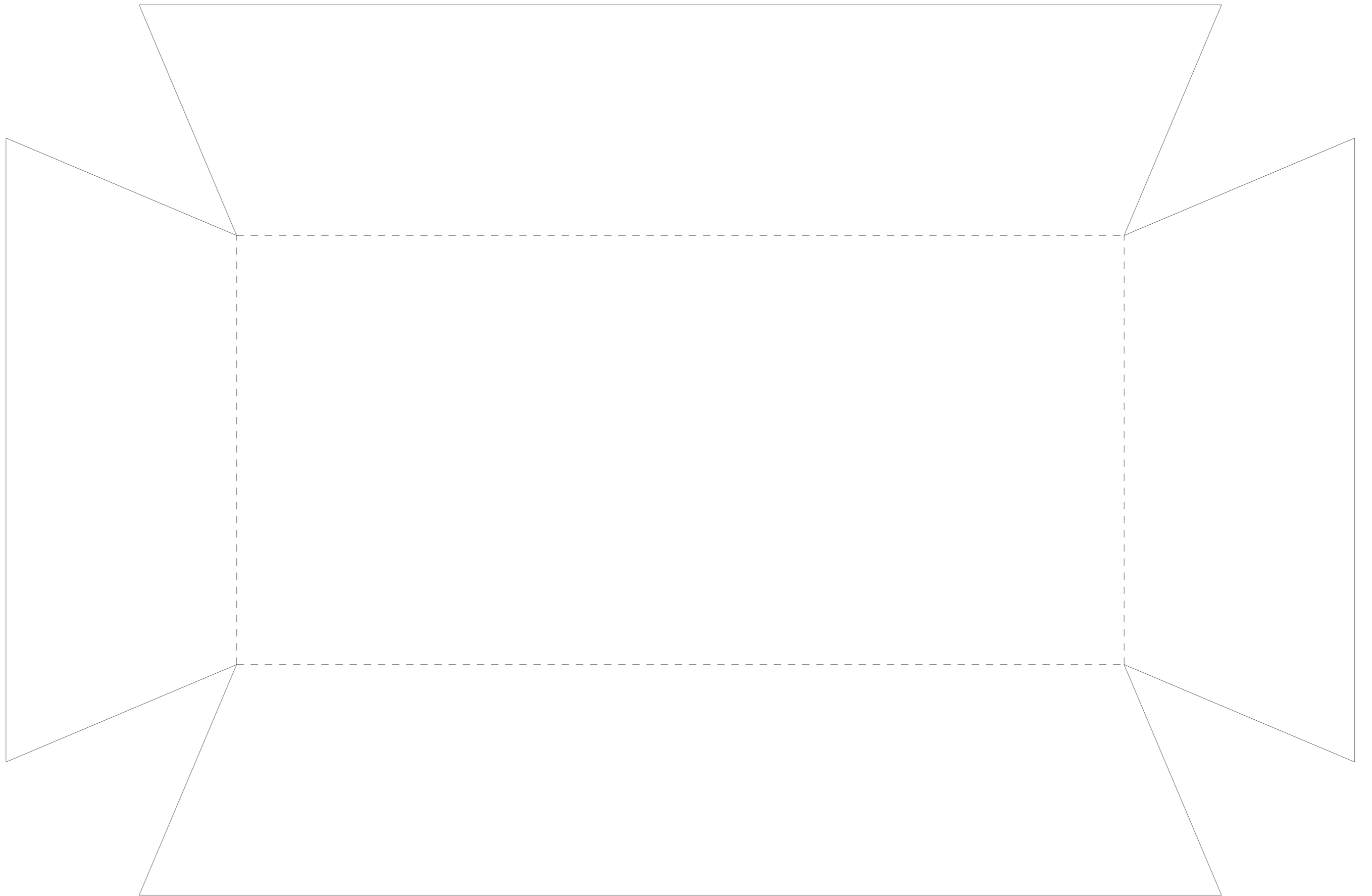
It connected with garden and we can feel comfortable.



Wall①

Let's open some windows on the inside of square dotted line!

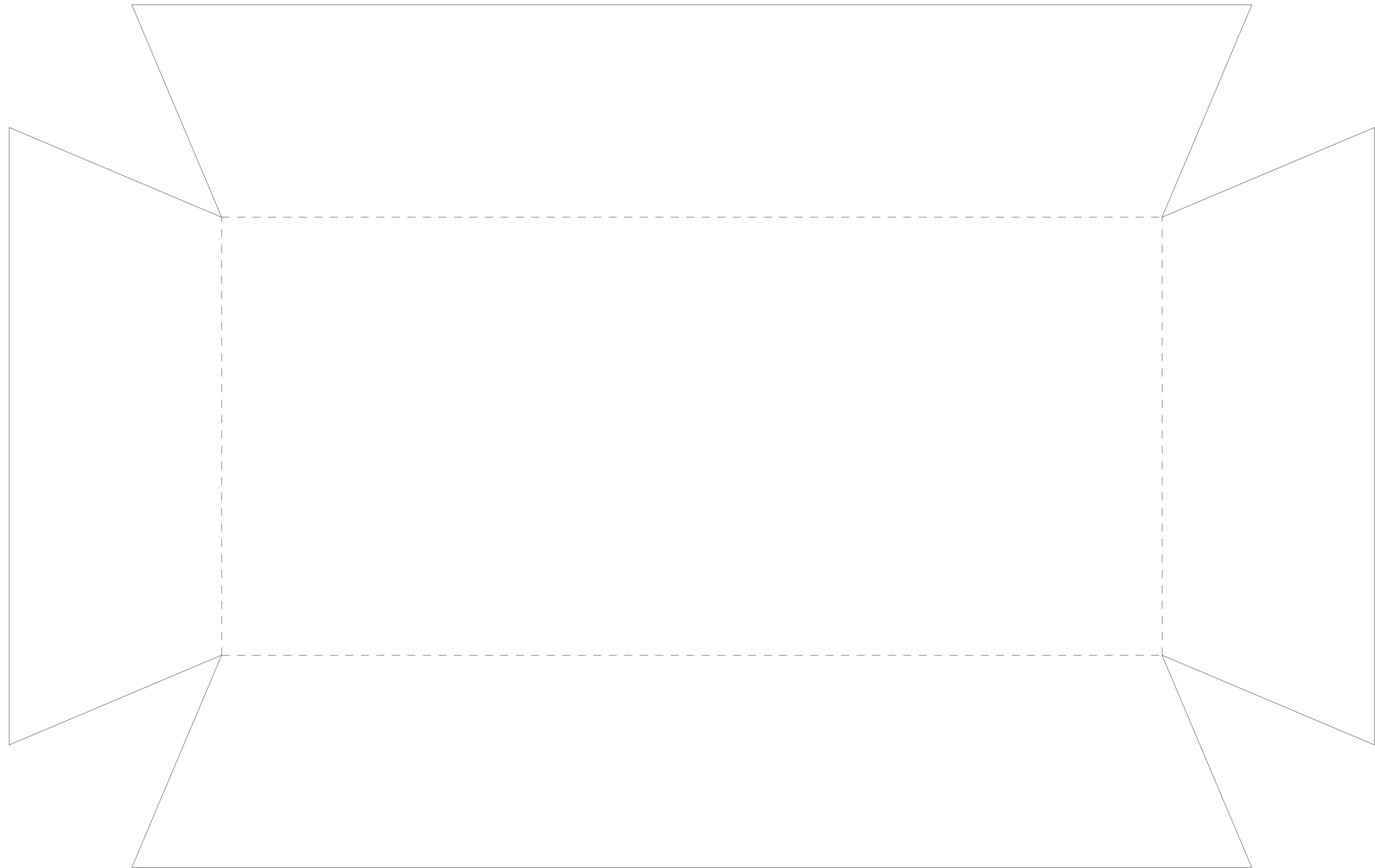
----- Notch the surface



## Wall②

Let's open some windows on the inside of square dotted line!

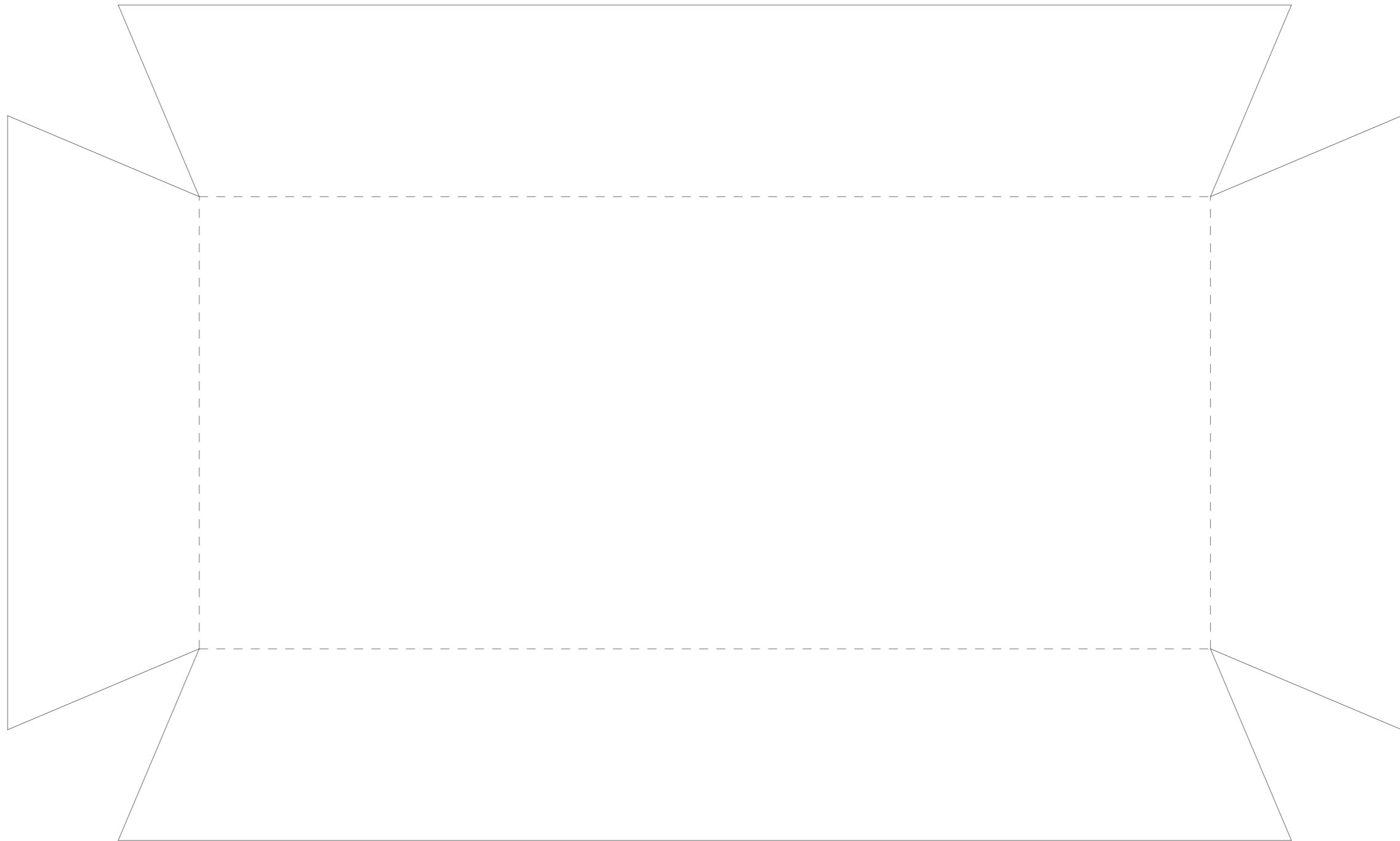
----- Notch the surface



## Wall③

Let's open some windows on the inside of square dotted line!

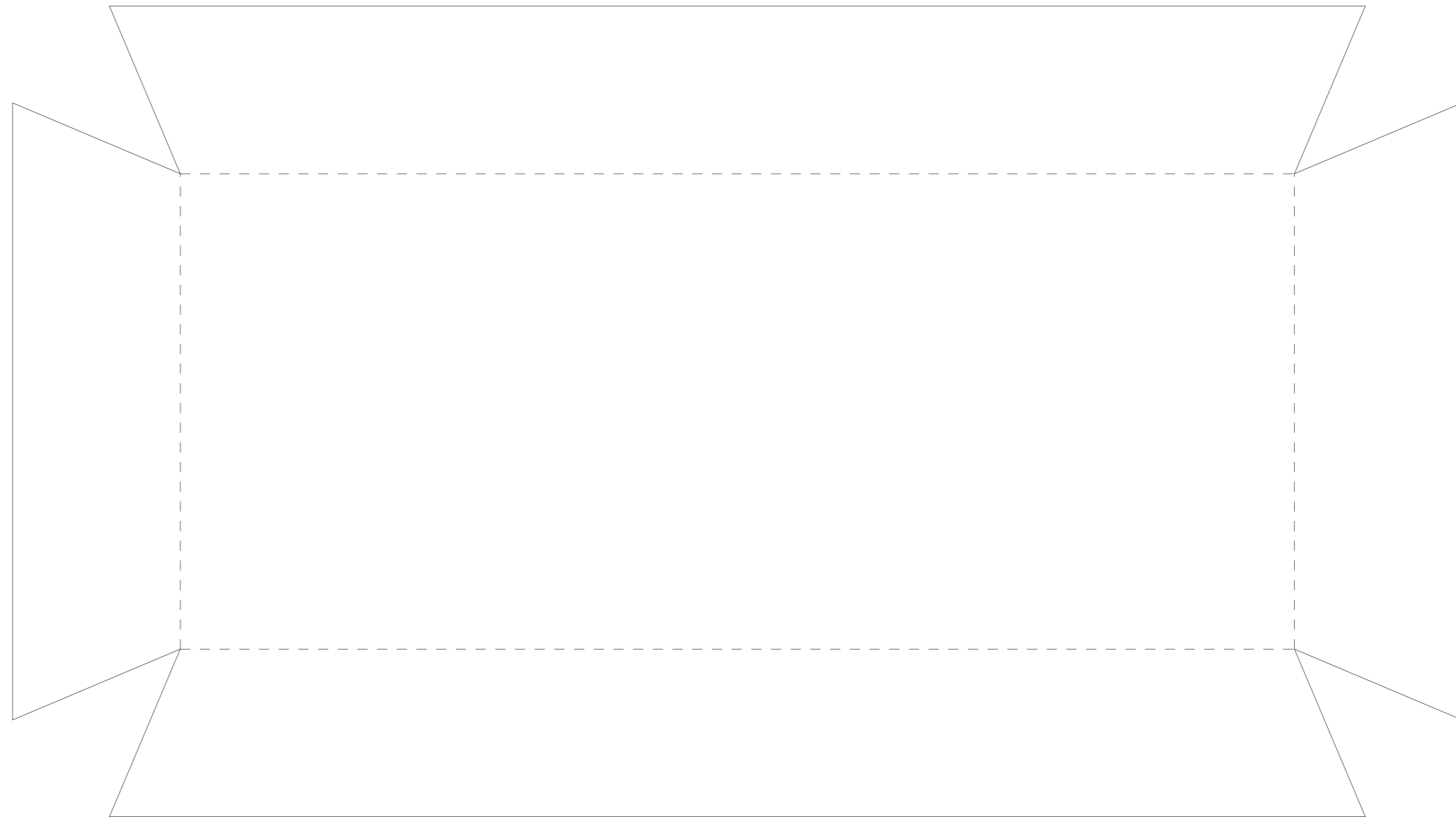
----- Notch the surface



## Wall④

Let's open some windows on the inside of square dotted line!

----- Notch the surface



## Wall⑤

Let's open some windows on the inside of square dotted line!

----- Notch the surface